



**WELDLINE™**  
by Lincoln Electric



# PERSONAL PROTECTIVE EQUIPMENT

MORE COMFORT & SAFETY FOR WELDERS

# GLOVES AND CLOTHES IN



# PREMIUM EUROPEAN LEATHER



The leather selection comes from one of the most important tanning centers in the world. Our partners are the experts in recognizing the origin of the leather, strength of the fibers and quality. Each production process, beginning with purchasing raw materials and ending with sewing, is fully controlled and validated.

These high quality leathers are required to produce the most prestigious products in the sector.

## DESIGNED FOR WELDERS BY WELDERS

Our gloves and clothes were studied and tested by a team of professional welders to better understand the Customer needs. Thanks to proper research and including professionals at development stage, we were able to provide products with lightness, softness, ergonomics and durability incomparable in the market.

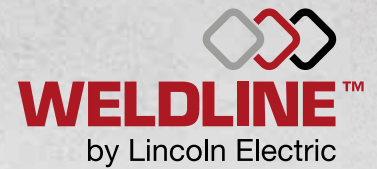
## THE STITCHING

The thread used for the stitching is very important, we use a high tenacity thread. By norm ISO 13938-1 the strength stitching must be > 110 Newton, our bursting strength of stitching is 608 Newton.

## ECO FRIENDLY LABEL

Lincoln Electric company follows a moral obligation to maintain focus on eco-friendly solutions. Our leather products are manufactured using 80% less water than traditional leather treatment, additionally all leather scraps are collected by a certified company in Italy (ILSA S.p.A.), which reuses the scraps and transform them into organic fertilizer.

# DO YOU OFFER YOUR WELDERS THE BEST POSSIBLE PROTECTION?



## THE RISKS

### FACE & EYES

90% of all workplace eye injuries are preventable with the use of proper safety eyewear, welding goggles and helmets.

Only 1% of approximately 770 workers suffering face injuries were wearing face protection.

### BODY

Every day, people are admitted to burn centers annually with severe arc flash burns.

### HAND AND FOREARM

25% of all work place accidents involved hands and fingers.

### LEGS

Risks of clothes catching fire from welding spatter and molten metal.

### FEET

Risks are perforations, falling object, burns and slipping.

## THE SOLUTIONS

### WELDING HELMET & SAFETY GLASSES

Electronic helmet allow the welder to be immediatly and automatically protected during the welding operation. A pair of safety glasses gives additional protection against i.e. grinding particules.

### WELDING JACKET

Welding jacket of flame retardant material of leather to protect the upper body, against welding spatters, grinding particles which permit to avoid burns.

### WELDING APRON

Welding apron in premium grade, split or grain leather will protect clothes from welding spatters and grinding particles.

### GLOVES & SLEEVES

The choice of welding gloves will depend on the welding application in order to offer the right protection and comfort. Sleeves over the jacket offer an additional protection of the arms.

### TROUSERS

Trousers of flame retardant material to protect the lower body against welding spatters, grinding particules and molten metal.

### SHOES & GAITERS

Leather shoes or boots wire safety be protection for best foot protection. Combine the welding shoes with gaiters to protect completely the bottom of the leg.



**Weldline by Lincoln Electric, more comfort and safety for welders.**

Discover our offer of quality products at [www.weldline.eu](http://www.weldline.eu)





**WELDLINE™**

by Lincoln Electric



# WELDING GLOVES

*Make sure to protect your hands.*

**MORE COMFORT & SAFETY FOR WELDERS**

# YOUR SAFETY IN PREMIUM QUALITY GLOVES AT A FAIR PRICE

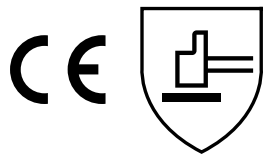
Our gloves are made with leather that have passed specific tests, for thermal and electrical risks. They are considered heat resistance. You can hold a 100-degree hot piece in your hand for 15 seconds.

The Personal Protection Equipment protects against risks deriving from operations involving welding operations and related procedures, [CLASS 2] suitable for manual welding techniques with strong formation of splashes and drops such as: MMA welding [with base electrode or cellulose coated], welding MAG [mixed CO<sub>2</sub> or gas], MIG [high current] welding, cored wire welding, plasma cutting, gouging, oxygen cutting, thermal spray painting, and for the operation of machines, for example in limited spaces for welding and cutting in overhead or similar position, in forced positions.

## European standard marking gloves:

### Mechanical hazards

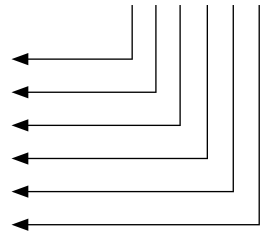
EN 388: 2016



4 2 3 4 x x

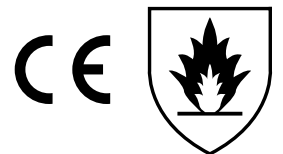
#### TEST

- Abrasion [0-4]
- Resistance to cutting [0-5]
- Resistance to tearing [0-4]
- Resistance to perforation [0-4]
- TDM resistance to cutting [E]; [A-F]
- Attenuation of impact [P]; [Pass/ Fail]



### Heat resistance

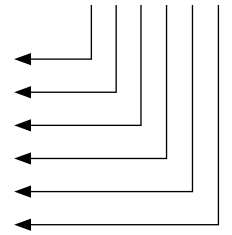
EN 407: 2004



4 1 3 2 4 x

#### TEST

- Reaction to flame [0-4]
- Contact heat [0-4]
- Convective heat [0-4]
- Radiating heat [0-4]
- Splattering with small quantities of molten metal [0-4]
- Splattering with large quantities of molten metal [0-4]



An index of x indicates that the glove has not been tested for this type of risk.

## MIG UNIVERSAL COMFORT

Index no	
Size 10	WG-MIG-1-CE

The UNIVERSAL COMFORT gloves are designed to protect the hand during normal welding applications in MMA/MIG/MAG/TIG processes and have a grain leather palm for extra sensitivity.



### Glove properties

Heat resistance



★★★★☆

Dexterity



★★★★★

Abrasion resistance



★★★★☆

Molten metal splashes



★★★★★

### Usage

**recommendation :**

MIG-MAG / MMA

### European Standard of gloves

- UNI EN 420: 2013+A1:2009
- UNI EN 388: 2016
- UNI EN 407: 2004
- UNI EN 12477: 2001+A1:2005

# MIG UNIVERSAL COMFORT +



Index no	
Size 10	WG-MIG-2-CE

The UNIVERSAL COMFORT + gloves are designed to protect the hand during normal welding applications in MMA/MIG/MAG processes.

## Glove properties

Heat resistance  ★★★★★	Dexterity  ★★★★★
Abrasion resistance  ★★★★★	Molten metal splashes  ★★★★★

## Usage

**recommendation :**  
MIG-MAG / MMA

## European Standard of gloves

UNI EN 420: 2013+A1:2009  
UNI EN 388: 2016  
UNI EN 407: 2004  
UNI EN 12477: 2001+A1:2005

# MIG IRON PROTECT



Index no	
Size 10	WG-MIG-3-CE

The MIG IRON PROTECT gloves are designed for a high level of protection of the hands during normal welding applications in MMA/MIG/MAG processes.

## Glove properties

Heat resistance  ★★★★★	Dexterity  ★★★★☆
Abrasion resistance  ★★★★☆	Molten metal splashes  ★★★★★

## Usage

**recommendation :**  
MIG-MAG / MMA

## European Standard of gloves

EN 420: 2009 3  
EN 388: 2016 4 2 3 4 x x  
EN 407: 2004 4 1 3 2 4 x  
EN 12477: 2001 + A1 2005

# MIG IRON PROTECT +



Index no	
Size 10	WG-MIG-4-CE

The MIG IRON PROTECT+ gloves are designed to protect for high level of protection of the hands during normal welding applications in MMA/MIG/MAG processes. **The natural grain leather palm gives extra sensitivity.**

## Glove properties

Heat resistance  ★★★★★	Dexterity  ★★★★☆
Abrasion resistance  ★★★★☆	Molten metal splashes  ★★★★★

## Usage

**recommendation :**  
MIG-MAG / MMA

## European Standard of gloves

UNI EN 420: 2013+A1:2009  
UNI EN 388: 2016  
UNI EN 407: 2004  
UNI EN 12477: 2001+A1:2005

# TIG FLEX SENSITIVE



The TIG FLEX SENSITIVE gloves are designed to give a high level of dexterity and flexibility for normal welding applications in TIG/Flame processes. The favorite gloves of TIG welders.  
*Goat leather.*

## Glove properties

Heat resistance



Dexterity



Abrasion resistance



Molten metal splashes



Index no

Size 8	WG-TIG-8-CE
Size 9	WG-TIG-9-CE
Size 10	WG-TIG-10-CE
Size 11	WG-TIG-11-CE

**Usage recommendation :**  
TIG

**European Standard of gloves**

UNI EN 420: 2013+A1:2009  
UNI EN 388: 2016  
UNI EN 407: 2004  
UNI EN 12477: 2001+A1:2005

# STOPCALOR ALU



The STOPCALOR ALU gloves are designed for a high level of protection of hands during heavy welding applications.

**COMFORT:** the Split leather and the cotton fl eece lining which increases the glove's thermal insulation. **RESISTANCE:** the aluminised Kevlar® textile back offers strong resistance to heat, radiation and small splashes of molten metal. **SAFETY:** the split leather cuff helps to protect a large part of the forearm against mechanical hazards.

## Glove properties

Heat resistance



Dexterity



Abrasion resistance



Molten metal splashes



Index no

Size 10 | W000010420

**Usage recommendation :**  
MIG-MAG / MMA

**European Standard of gloves**

EN 420: 2003 5  
EN 388: 2003 3143 x x  
EN 407: 2004 41344 x  
EN 12477: 2000 typeA

# ACCESSORIES: THERMAL SCREEN



MIG/MAG and MMA welding processes.  
Thermal protection added to a glove.

Index no | W000335162

EN 532

- Dimensions 200 x 150 mm.
- Fitted with two elastic straps at palm and cuff level.
- Split leather lined with Kevlar. Heat and flame resistant.
- One aluminized side reflects 95% of radiant heat.
- Double Kevlar thread seams.
- Delivered by 2 pieces.





**WELDLINE™**

by Lincoln Electric

  
**WELDLINE**  
by Lincoln Electric

**WELD'fit**

*Your safety in the WELD'fit comfort!*

**MORE COMFORT & SAFETY FOR WELDERS**

# YOUR SAFETY IN THE WELD'fit COMFORT!

WELD'fit products, heat and flame resistant, provide the higher protection for the welders.

## Standard:

Rules (EU) 2016/425 European Regulation on Personal Protective Equipment

**UNI EN ISO 13688:2013:** *[general requirements for innocuousness, ergonomics and sizes],*

**UNI EN ISO 11611:2015:** *[use in welding operations and related procedures]*

Products are manufactured according to the Rules (EU) 2016/42

## Composition:

- **Jacket:** split leather, grain leather
- **Apron, Sleeves and Gaiters:** split leather, grain leather

## Use:

Jackets, Apron, Sleeves and gaiters are clothes for welders in Class 2 suitable for use during manual welding techniques in which major drops and splatters are formed, such as, for example: MMA welding *[with basic electrode or covered with cellulose]*, MAG welding *[CO<sub>2</sub> or mixed gases]*, MIG welding *[with high current]*, welding with flux cored wire, plasma cutting, trimming, oxygen cutting, thermal spray painting, and operation of machinery, for example, in tight spaces, welding and cutting in overhead or similar positions, or in narrow spaces.

The garment protects accidental contact with small flames, splattered molten metal, radiating heat and brief accidental electrical contact. Not meant for any other type of protection than the use described above. The manufacturer will not be held responsible for any damage that could occur from such practices.

## GAITERS



Gaiters in split leather fastened **with straps or with leather band**. Gaiters are used to protect the bottom of the trousers and shoes from sparks and heat generated during welding and grinding operations. Width 30cm.

### Technical description

- The gaiters are manufactured in four pieces that are stitched together, completed with adjustable leather belt or velcro strap and under-strap to secure the shoes.

**GAITERS with STRAPS** W000404081

**GAITERS with VELCRO** W000404082

PPE II° category  
Certified by EU 425/2016  
EN 11611 A1 Class 2

## SHORT AND LONG SLEEVES

The short and long sleeves in split leather are intended to protect arms from fine welding spatters.



**SHORT  
OVERSLEEVES**

W000404083

**Cover sleeves  
width 40 cm,**  
ergonomic,  
elastic at the  
end.

**Cover sleeves width 60 cm,**  
ergonomic, elastic at the  
wrist and leather laces on  
the shoulders, fastening  
with rapid connection.

### Technical description

- Fixed with leather straps.
- Tightening elastic to the wrists.
- Single size.

PPE II° category  
Certified by EU 425/2016  
EN 11611 A1 Class 2

**LONG  
OVERSLEEVES**

W000404084



# GRAIN LEATHER APRON

This apron is designed to protect clothes from welding spatters and grinding particles.

## Technical description

- Leather strap fixed through bound eyelets to the waist and flap.
- Single size.
- With leather laces, fastening with rapid connection, measures 1100x800 mm.

**GRAIN APRON 1100x800** W000404085

PPE II° category  
Certified by EU 425/2016  
EN 11611 A1 Class 2



# SPLIT LEATHER APRON

This apron is designed to protect clothes from welding spatters and grinding particles.

**Split leather apron with leather laces, fastening with rapid connection, measures 1100x800 mm.**

**SPLIT APRON 1100x800** W000404086

**Split leather apron fastening with rapid connection, measures 900x600 mm.**

**SPLIT APRON 900x600**  
Leather laces W000404087

**Split leather apron with eyelets and fabric laces, measures 900x600 mm.**

**SPLIT APRON 900x600**  
Fabric laces W000404088

## Technical description

- Leather or cotton strap with quick release clips to the waist and flap.
- Single size.
- Sewn finish with red fabric border



Closing by clips or cotton straps



PPE II° category  
Certified by EU 425/2016  
EN 11611 A1 Class 2

# SPLIT LEATHER WELDING JACKET

**Split leather jacket**, comfortable, fastened with snap buttons covered by leather, pocket inside, elastic at the wrist.

Welding jacket in split leather are designed to protect the upper body of the user from fine welding spatters and grinding particles.

## Technical description

- The jacket fastens in the front with an overlap of leather and Velcro for additional protection against spatters, the inner neck is made of double cotton for comfort.
- Tightening elastic to the wrists.
- Finished in red trim.
- Length: +/- 780 mm.
- Available sizes: L, XL and XXL.

**SPLIT LEATHER  
WELD JACKET  
Size L**

W000404090-L

**SPLIT LEATHER  
WELD JACKET  
Size XL**

W000404090

**SPLIT LEATHER  
WELD JACKET  
Size XXL**

W000404091

PPE II° category  
Certified by EU 425/2016  
EN 11611 A1 Class 2



**Button closure  
under flap**



**Breathable**



**Customize your welding  
jacket thanks to the  
removable velcro band**



# GRAIN LEATHER WELDING JACKET

Grain leather jacket, comfortable, regular fit, fastened with snap buttons covered by leather, pocket inside, elastic at the wrist.

Half-back flame-retardant cotton.



## Technical description

- Half of the back is made from flame retardant cotton ensuring a light, flexible Jacket.
- The jacket fastens in the front with an overlap of leather and Velcro for additional protection against spatters, the inner neck is made of double cotton for comfort.
- Tightening elastic to the wrists.
- Finished in red trim.
- Length: +/- 780 mm.
- Available sizes: L, XL and XXL.

GRAIN LEATHER  
WELD JACKET  
Size L

W000404092-L

GRAIN LEATHER  
WELD JACKET  
Size XL

W000404092

GRAIN LEATHER  
WELD JACKET  
Size XXL

W000404093

PPE II° category  
Certified by EU 425/2016  
EN 11611 A1 Class 2



With the blank velcro  
add your company  
logo, name, message  
of your choice\*.

\* Not included



**WELDLINE™**

by Lincoln Electric

# WELDING SHOES

*Safety boots with special cuff  
for welding protection.*

**MORE COMFORT & SAFETY FOR WELDERS**

# PANTER - FUSION 49 S3

## YOUR SAFETY IN STURDY, COMFORTABLE AND STYLISH WELDING SHOES

**Safety boots with special cuff for welding protection.**

Produced from extra thick full grain leather, breathable and fireproof. Protects against high temperatures, additionally extraordinary strength and durability.

- ▶ Protective footwear against thermal risks and splashes of molten metal. Resistant to flames and sewn with flame retardant yarn.
- ▶ Non-metallic anti impact toe cap and flexible puncture proof midsole.
- ▶ Special nitrile rubber sole resistant to high temperatures (300 °C). Effective insulation from cold and extreme heat. Adherent to all kinds of surfaces, it provides traction and stability. Resistant to oils and hydrocarbons.
- ▶ Antistatic boot.
- ▶ Wide frame that does not imprison the foot.
- ▶ Removable and interchangeable antibacterial, antistatic and anti-fungus insoles.
- ▶ Very breathable wear resistant lining.
- ▶ Anti-scratch custom fit ankle support padding.
- ▶ Reinforced toe that protects the area most exposed to bumps and chafing, guaranteeing a longer shoe life.
- ▶ Double closure for better fit and protection against metal sparks. Contact closures with high performance industrial fabric and inner laces with leather bellows tongue that prevents the entry of foreign objects.



### Level of protection

S3+WG+Hi1+Ci+HRO+AN



### Standard

EN ISO 20345  
EN ISO 20349

### Sizes

From 36 to 48

### PANTER FUSION 49 S3

Size 36	W49S3T36	Size 43	W49S3T43
Size 37	W49S3T37	Size 44	W49S3T44
Size 38	W49S3T38	Size 45	W49S3T45
Size 39	W49S3T39	Size 46	W49S3T46
Size 40	W49S3T40	Size 47	W49S3T47
Size 41	W49S3T41	Size 48	W49S3T48
Size 42	W49S3T42		

### Natural full grain leather combining Maximum Hydrofugation and Flameproof Treatment

- Thick and resistant to tear
- Seams made with flame retardant wire
- Resistant to flame and splashes of molten metal
- Design, yarns, fiber and engineering complying with EN ISO 20349



### PU + High Temperature (300 °C) Nitrile rubber

- Resistance to heat contact up to 300 °C
- Resistant to oils and hydrocarbons
- Resistant to abrasion - effective cold and extreme hot insulation
- Electrically insulating
- Special anti-slip design and system of energy absorption in the heel



### Heat resistant

- Antifungal
- Antistatic
- Antibacterial



### 200 J Plastic

- Impact resistant to over 200 joules
- Extra wide
- Very light
- Elastic memory
- Electrically insulating
- Maximum EN ISO 20345 Certification



### Puncture Proof Non-Metallic

- Extraordinary flexible and light
- Self molded to the natural shape of the foot without rigidity
- Comfort and protection
- Zero Penetration
- Super Flexible and light
- Maximum EN ISO 20345 Certification



**WELDLINE™**

by Lincoln Electric



**WELD'her**

*Personal protective equipment*

**MORE COMFORT & SAFETY FOR WELD'her**



# TIG FLEX SENSITIVE FEMALE



The TIG FLEX SENSITIVE FEMALE gloves are designed to ensure the high level of dexterity and flexibility for regular welding applications in TIG/Flame processes. Made of goat leather, they are the favorite gloves of female TIG welders.

## Glove properties

Heat resistance



Dexterity



Abrasion resistance



Molten metal splashes



## Index no

Size 8	WG-TIG-8-CE-L
Size 9	WG-TIG-9-CE-L

**Recommended use:**  
TIG

**European standard of gloves:**

UNI EN 420: 2013+A1:2009  
UNI EN 388: 2016  
UNI EN 407: 2004  
UNI EN 12477: 2001+A1:2005

# MIG UNIVERSAL COMFORT FEMALE



The UNIVERSAL COMFORT FEMALE gloves are designed to protect hands during regular welding applications in MMA/MIG/MAG/TIG processes and have grain leather palms for extra sensitivity.

## Glove properties

Heat resistance



Dexterity



Abrasion resistance



Molten metal splashes



## Index no

Size 8	WG-MIG-1-CE-T8-L
Size 9	WG-MIG-1-CE-T9-L

**Recommended use:**  
MIG-MAG / MMA

**European standard of gloves:**

UNI EN 420: 2013+A1:2009  
UNI EN 388: 2016  
UNI EN 407: 2004  
UNI EN 12477: 2001+A1:2005

# GRAIN LEATHER WELDING JACKET FEMALE

Fastened with snap buttons covered by leather, grain leather jackets for HER are adjustable and comfortable. These welding jackets are designed to protect the upper body.

## Technical description

- 100% leather
- The jacket overlaps in the front offering additional protection against spatters. The inner neck coating consists of two layers of cotton for extra comfort
- Finished in pink trim
- Length: +/- 780 mm
- Available sizes: S, M, L, XL
- Included: 1 split leather bag



Index no	
Size S	WJL-S-2019
Size M	WJL-M-2019
Size L	WJL-L-2019
Size XL	WJL-XL-2019

PPE II° category  
Certified by EU 425/2016  
EN 11611 A1 Class 2

**SMART:**  
Use the bag provided  
with the jacket to create  
your personalized package.



# EUROSPEED LS EDITION FEMALE

All the comfort and security of liquid crystal technology in a protective and comfortable welding helmet.

- Robust, comfortable design
- Internal grinding mode
- Soft, comfortable sweat band

## Technical description

- Optical class: 1/1/2
- Lens switching: 0,04ms
- Lens shade: 3.5/9-13
- Two independent sensors
- TIG Amp rating:  $\geq 5A$  DC &  $\leq 5A$  AC
- Viewing area: 4 312 mm<sup>2</sup>

### Delivered with:

2 outside protection plates, 1 inside protection plate, 1 sweat band and 1 comfort cushion on the headgear



FLEXSPEED LS



For welding process:  
MMA, MIG MAG, TIG



WARRANTY  
**18**  
MONTH



Index no W000403824-2

## HIGH QUALITY AUTODARKENING HELMETS

### NEW LIGHT SHADE TECHNOLOGY - NATURAL VISION

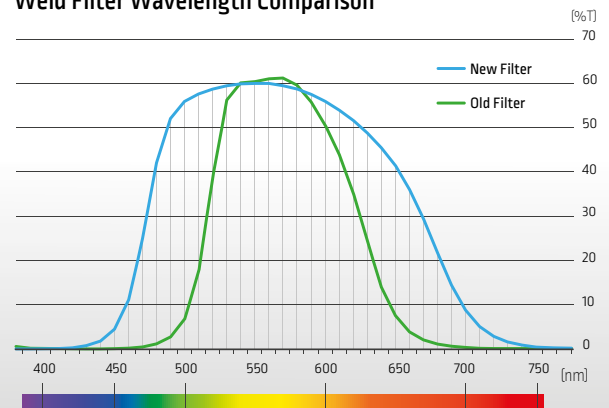
- Natural vision for more comfort for the welders
- Better color perception for more safety
- A larger color panel for clearer vision of the bead and of the environment from shade 3 to 13

### NEW LIGHT SHADE WELDING FILTER

The New Welding Filter offers better protection against harmful rays while ensuring higher penetration ratio allowing the welder to recognise brighter objects. In addition, the recognisable colors are enhanced and more natural than traditional yellow/green. This, in turn, improves efficiency and reduces fatigue.

The lens improved as natural color can make the user recognize the object with ungarbled color so it can reduce feeling of fatigue and improve operation efficiency.

Weld Filter Wavelength Comparison



# BEING PRESENT LOCALLY MAKES US MORE AWARE GLOBALLY

**125**  
YEARS OF EXPERIENCE

**325+**  
GLOBAL R&D TEAM



**3.0**  
BILLION USD REVENUE

**38**  
SOLUTION CENTERS

**11 000**  
EMPLOYEES WORLDWIDE

- 📍 Global Headquarters
- Solution Centers

## CUSTOMER ASSISTANCE POLICY

The business of The Lincoln Electric Company® is manufacturing and selling high quality welding equipment, consumables, and cutting equipment. Our challenge is to meet the needs of our customers and to exceed their expectations. On occasion, purchasers may ask Lincoln Electric for information or advice about their use of our products. Our employees respond to inquiries to the best of their ability based on information provided to them by the customers and the knowledge they may have concerning the application. Our employees, however, are not in a position to verify the information provided or to evaluate the engineering requirements for the particular weldment. Accordingly, Lincoln Electric does not warrant or guarantee or assume any liability with respect to such information or advice. Moreover, the provision of such information or advice does not create, expand, or alter any warranty on our products. Any express or implied warranty that might arise from the information or advice, including any implied warranty of merchantability or any warranty of fitness for any customers' particular purpose is specifically disclaimed.

Lincoln Electric is a responsive manufacturer, but the selection and use of specific products sold by Lincoln Electric is solely within the control of, and remains the sole responsibility of the customer. Many variables beyond the control of Lincoln Electric affect the results obtained in applying these types of fabrication methods and service requirements.

Subject to Change – This information is accurate to the best of our knowledge at the time of printing. Please refer to [www.lincolnelectric.eu](http://www.lincolnelectric.eu) for any updated information.



[www.lincolnelectriceurope.com](http://www.lincolnelectriceurope.com)

