

SCHEDA TECNICA – GIUBBETTO TPS

COD. A10151

TESSUTO

TESSUTO ALTA VISIBILITA' GIALLO

75% cotone, 24% poliestere, 1% fibra conduttiva

Peso 270 g/m²

TESSUTO BLU

75% cotone, 24% poliestere, 1% fibra conduttiva

Peso 260 g/m²

DESCRIZIONE

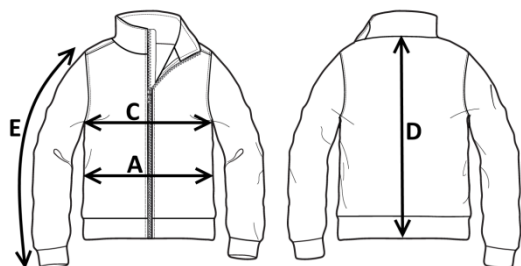
Giubbetto da lavoro con chiusura anteriore con bottoni tradizionali coperti, collo a camicia.

Due taschini applicati al petto chiusi con aletta e velcro, elastico al fondo manica, spalloni profilati con coda di topo rossa.

Travette varie di colore giallo, etichetta jacquard con pittogrammi cucita su taschino petto destro, due strisce rifrangenti.

TAGLIE

S, M, L, XL, XXL, XXXL



Il margine di tolleranza produttivo, nel rispetto delle dimensioni della taglia, può essere del +/- 3%

SIZE - cm	S	M	L	XL	XXL	XXXL
C – ½ CIRCONFERENZA TORACE	57	60	63	66	69	72
A – ½ CIRCONFERENZA VITA	54,5	57,5	60,5	63,5	66,5	69,5
D – LUNGHEZZA CENTRO DIETRO	68,8	71	73,3	75,5	77,8	80,2
E – LUNGHEZZA MANICA CON POLSO	64,1	65,5	66,9	68,3	69,7	71,1

rossini.
TECH

CE

III^a categoria
EN ISO 13688:2013

EN 1149-5:2008

EN ISO 11611:2015 CLASSE 1 A1

EN ISO 11612:2015 A1 B1 C1 E2 F1

CEI EN 61482-1-2: 2008 CLASSE 1 (4 KA)

EN 13034:2005+A1:2009 TIPO 6

EN ISO 20471:2013 + A1:2016 CLASSE 2



42 - GIALLO/BLU

TECHNICAL SHEET – TPS JACKET

CODE A10151

FABRIC

HIGH VISIBILITY YELLOW

75% cotton, 24% polyester, 1% conductive fiber

Weight 270 g/m²

BLUE FABRIC

75% cotton, 24% polyester, 1% conductive fiber

Weight 260 g/m²

DESCRIPTION

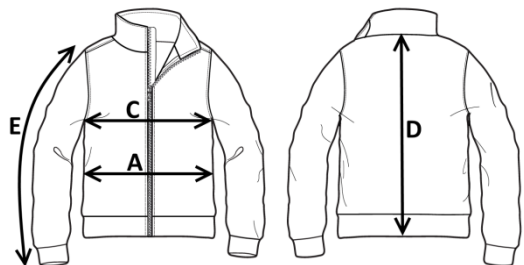
Work jacket closing in front with traditional covered buttons, shirt collar.

Two breast patch pockets closed with flap and Velcro, elasticised cuffs at the bottom of the sleeve, shoulder straps outlined with red reflective piping.

Various yellow bar tacks and jacquard label with pictogram sewn on right chest pocket, two reflective stripes.

SIZES

S, M, L, XL, XXL, XXXL




Measurements may vary +/- 3%, tolerance within size scale


SIZE - cm	S	M	L	XL	XXL	XXXL
C – ½ CHEST CIRCUMFERENCE	57	60	63	66	69	72
A – ½ WAIST CIRCUMFERENCE	54,5	57,5	60,5	63,5	66,5	69,5
D – CENTER BACK LENGTH	68,8	71	73,3	75,5	77,8	80,2
E – SLEEVE LENGTH WITH CUFF	64,1	65,5	66,9	68,3	69,7	71,1


rossini.
TECH


CE


3RD CATEGORY
EN ISO 13688:2013

 EN 1149-5:2008

 EN ISO 11611:2015 CLASS 1 A1

 EN ISO 11612:2015 A1 B1 C1 E2 F1

 CEI EN 61482-1-2: 2008 CLASS 1 (4 KA)

 EN 13034:2005+A1:2009 TYPE 6

 EN ISO 20471:2013 + A1:2016 CLASS 2



42 – YELLOW/BLUE

FICHA TÉCNICA – CAZADORA TPS

CÓD. A10151

COMPOSICIÓN

Alta visibilidad amarillo

75% algodón, 24% poliéster, 1% fibra conductora

Peso 270 g/m²

Tejido azul

75% algodón, 24% poliéster, 1% fibra conductora

Peso 260 g/m²

DESCRIPCIÓN

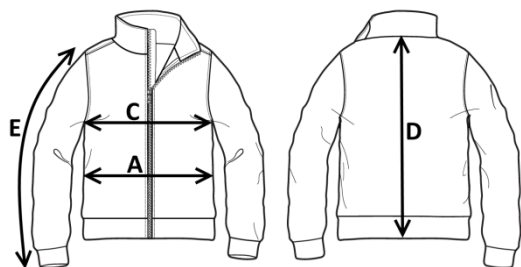
Cazadora de trabajo con cierre delantero con botones tradicionales cubiertos, cuello de camisa.

Dos pequeños bolsillos de parche en el pecho cerrados con solapa y velcro, elástico al final de la manga, canesús con bordes de cola de ratón roja.

Varias puntadas de presilla amarillas, etiqueta jacquard con pictogramas cosida en el bolsillo pequeño de la parte derecha y dos bandas reflectantes.

TALLAS

S, M, L, XL, XXL, XXXL




El margen de tolerancia productiva, respetando las dimensiones de la talla, puede ser de +/- 3%


SIZE - cm	S	M	L	XL	XXL	XXXL
C – ½ CIRCUNFERENCIA TORÁCICA	57	60	63	66	69	72
A – ½ CIRCUNFERENCIA DE LA CINTURA	54,5	57,5	60,5	63,5	66,5	69,5
D – LONGITUD CENTRAL ESPALDA	68,8	71	73,3	75,5	77,8	80,2
E – LONGITUD DE LA MANGA HASTA LA MUÑECA	64,1	65,5	66,9	68,3	69,7	71,1


rossini.
TECH


CE


IIIª categoría
EN ISO 13688:2013


 EN 1149-5:2008

 EN ISO 11611:2015 CLASE 1 A1

 EN ISO 11612:2015 A1 B1 C1 E2 F1

 CEI EN 61482-1-2: 2008 CLASE 1 (4 KA)

 EN 13034:2005+A1:2009 TIPO 6

 EN ISO 20471:2013 + A1:2016 CLASE 2



42 – AMARILLO/AZUL

FISA TEHNICA – GEACĂ TPS

COD. A10151

MATERIAL

Înaltă vizibilitate galben:

75% bumbac, 24% poliester, 1% fibră conductivă

Greutate 270 g/m²

Material albastru:

75% bumbac, 24% poliester, 1% fibră conductivă

Greutate 260 g/m²

DESCRIERE

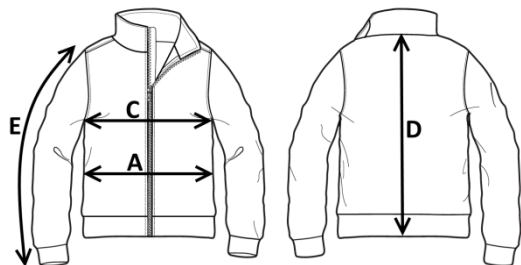
Geacă de lucru cu închidere în față cu nasturi clasici acoperiți, guler tip cămașă.

Două buzunare mici aplicate pe piept, închise cu clapă și scai, elastic la manșeta mânecii, umeri profilate cu bandă îngustă roșie.

Cusături de întărire de culoare galbenă, etichetă Jacquard cu pictograme cusută pe buzunarul de la piept din dreapta, două benzi reflectorizante.

MĂRIMI

S, M, L, XL, XXL, XXXL




Marja de toleranță a producției, respectând dimensiunile mărimii, poate fi de +/-3%.


SIZE - cm	S	M	L	XL	XXL	XXXL
C – ½ CIRCUMFERINȚĂ TORACE	57	60	63	66	69	72
A – ½ CIRCUMFERINȚĂ TALIE	54,5	57,5	60,5	63,5	66,5	69,5
D – LUNGIME SPATE	68,8	71	73,3	75,5	77,8	80,2
E – LUNGIME MÂNECĂ CU MANȘETĂ	64,1	65,5	66,9	68,3	69,7	71,1


rossini.
TECH


CE

Categoria III
EN ISO 13688:2013

 EN 1149-5:2008

 EN ISO 11611:2015 CLASA 1 A1

 EN ISO 11612:2015 A1 B1 C1 E2 F1

 CEI EN 61482-1-2: 2008 CLASA 1 (4 KA)

 EN 13034:2005+A1:2009 TIP 6

 EN ISO 20471:2013 + A1:2016 CLASA 2



42 – GALBEN/BLEUMARIN