

# SCHEDA TECNICA – GIUBBOTTO SOFTSHELL HOOK HI-VIS

COD. HH263

## TESSUTO

ALTA VISIBILITA'

100% poliestere mechanical stretch

Peso 300 g/m<sup>2</sup>

PLUS DI PRODOTTO



5000 mm WP / 800 MVP

rossini.  
TECH

CE

CATEGORIA II

EN ISO 13688:2013+A1:2021



EN ISO 20471:2013+A1:2016

CLASSE 3

50 LAVAGGI

## DESCRIZIONE

Giubbotto alta visibilità in **Softshell mechanical stretch a tre strati**, interno foderato in micro pile alta visibilità, collo alto, chiusura centrale con zip waterproof, cappuccio removibile con zip, taschino al petto esterno e tasca interna con velcro, due tasche laterali con zip waterproof, polso regolabile con velcro.

**Maniche removibili** con zip, fondo posteriore arrotondato, inserti di tessuto di colore a contrasto, strisce rifrangenti anteriori e posteriori stampate a transfer con motivo diagonale.



21 – ARANCIO/BLU



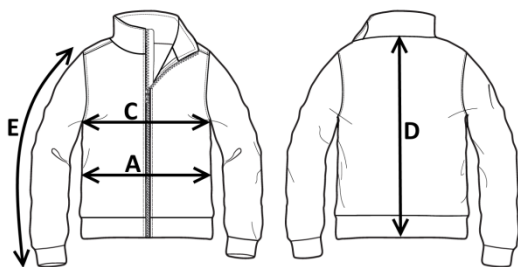
42 – GIALLO/BLU



42 – GIALLO/BLU

## TAGLIE

S, M, L, XL, XXL, XXXL, 4XL, 5XL



Il margine di tolleranza produttivo, nel rispetto delle dimensioni della taglia, può essere del +/- 3%

| SIZE - cm                      | S  | M  | L  | XL | XXL | XXXL | 4XL | 5XL |
|--------------------------------|----|----|----|----|-----|------|-----|-----|
| C – ½ CIRCONFERENZA TORACE     | 54 | 56 | 59 | 62 | 65  | 68   | 72  | 76  |
| A – ½ CIRCONFERENZA VITA       | 54 | 56 | 59 | 62 | 65  | 68   | 72  | 76  |
| D – LUNGHEZZA CENTRO DIETRO    | 73 | 75 | 77 | 49 | 81  | 83   | 85  | 87  |
| E – LUNGHEZZA MANICA CON POLSO | 64 | 66 | 68 | 70 | 72  | 74   | 76  | 78  |



# UK TECHNICAL SHEET - HOOK HI-VIS SOFTSHELL JACKET

CODE HH263

## FABRIC

HIGH VISIBILITY

100% Mechanical Stretch Polyester

Weight 300 g/m<sup>2</sup>

### PRODUCT PLUS



5000 mm WP / 800 MVP

**rossini.**  
TECH

CE

CATEGORY II

EN ISO 13688:2013+A1:2021



EN ISO 20471:2013+A1:2016

CLASS 3

50 WASHES

## DESCRIPTION

High-visibility jacket in **three-layer mechanical stretch softshell fabric**, high visibility micro fleece lined interior, high neck, central waterproof zip closure, removable hood with zip, external breast pocket and internal pocket with velcro closure, two side pockets with waterproof zip closure, cuff with Velcro adjustable fastener.

**Removable sleeves** with zip, rounded back bottom, fabric inserts in contrasting colour, transfer-printed reflective stripes at the front and back with diagonal pattern.



21 - ORANGE/BLUE



42 - YELLOW/BLUE

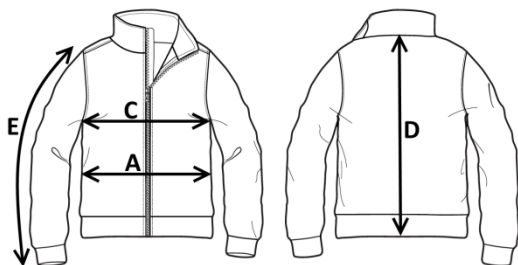


42 - YELLOW/BLUE



## SIZES

S, M, L, XL, XXL, XXXL, 4XL, 5XL



Measurements may vary +/- 3%, tolerance within size scale

| SIZE - cm                   | S  | M  | L  | XL | XXL | XXXL | 4XL | 5XL |
|-----------------------------|----|----|----|----|-----|------|-----|-----|
| C - 1/2 CHEST CIRCUMFERENCE | 54 | 56 | 59 | 62 | 65  | 68   | 72  | 76  |
| A - 1/2 WAIST CIRCUMFERENCE | 54 | 56 | 59 | 62 | 65  | 68   | 72  | 76  |
| D - CENTER BACK LENGTH      | 73 | 75 | 77 | 49 | 81  | 83   | 85  | 87  |
| E - SLEEVE LENGTH WITH CUFF | 64 | 66 | 68 | 70 | 72  | 74   | 76  | 78  |

# FICHA TÉCNICA – CHAQUETA SOFTSHELL HOOK HI-VIS

CÓD. HH263

## COMPOSICIÓN

ALTA VISIBILIDAD

100% poliéster stretch mecánico

Peso 300 g/m<sup>2</sup>

## DESCRIPCIÓN

Chaqueta de alta visibilidad en **Softshell con stretch mecánico de tres capas**, interior forrado en microfibra de alta visibilidad, cuello alto con cierre central de cremallera impermeable, capucha removible con cremallera, bolsillo en el pecho exterior y bolsillo interior con velcro, dos bolsillos laterales con cremallera impermeable, puño ajustable con velcro.

Mangas desmontables con cremallera, parte trasera redondeada, inserciones de tejido en color contrastante, bandas reflectantes delanteras y traseras impresas a transferencia con diseño segmentado.

## TALLAS

S, M, L, XL, XXL, XXXL, 4XL, 5XL

## VENTAJAS DEL PRODUCTO



5000 mm WP / 800 MVP

rossini.  
TECH

CE

CATEGORÍA II

EN ISO 13688:2013+A1:2021



EN ISO 20471:2013+A1:2016

CLASE 3

50 LAVADOS



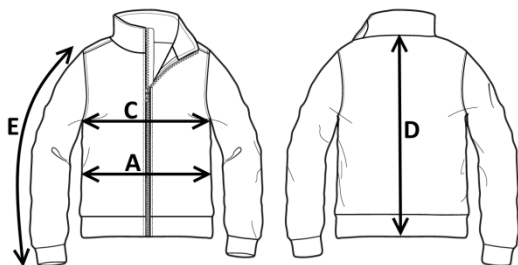
21 – NARAJA/AZUL



42 – AMARILLO/AZUL



42 – AMARILLO/AZUL



El margen de tolerancia productiva, respetando las dimensiones de la talla, puede ser de +/- 3%

| SIZE - cm                                | S  | M  | L  | XL | XXL | XXXL | 4XL | 5XL |
|--|----|----|----|----|-----|------|-----|-----|
| C – ½ CIRCUNFERENCIA TORÁCICA            | 54 | 56 | 59 | 62 | 65  | 68   | 72  | 76  |
| A – ½ CIRCUNFERENCIA DE LA CINTURA       | 54 | 56 | 59 | 62 | 65  | 68   | 72  | 76  |
| D – LONGITUD CENTRAL ESPALDA             | 73 | 75 | 77 | 49 | 81  | 83   | 85  | 87  |
| E – LONGITUD DE LA MANGA HASTA LA MUÑECA | 64 | 66 | 68 | 70 | 72  | 74   | 76  | 78  |

# FISA TEHNICA – GEACĂ SOFTSHELL HOOK HI-VIS

COD. HH263

## MATERIAL

VIZIBILITATE RIDICATĂ

100% poliester stretch mecanic

Greutate 300 g/m<sup>2</sup>

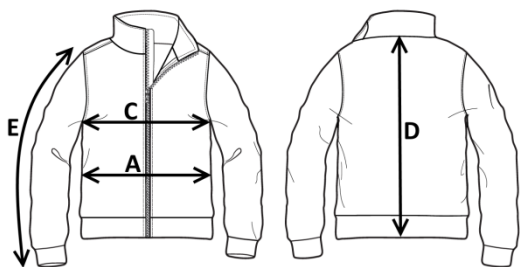
## DESCRIERE

Geacă de înaltă vizibilitate din țesătură moale stretch mecanică cu trei straturi, interior căptușit cu micro fleece de înaltă vizibilitate, guler înalt, închidere centrală cu fermoar impermeabilă, glugă detașabilă cu fermoar, buzunar extern pentru piept și buzunar interior cu închidere cu velcro, două buzunare laterale cu închidere cu fermoar impermeabil, manșetă cu fixare reglabilă Velcro.

Mânci detașabile cu fermoar, fund rotunjit în spate, inserții de material textil în culori contrastante, dungi reflectorizante imprimate prin transfer în față și în spate cu model diagonal.

## MĂRIMI

S, M, L, XL, XXL, XXXL, 4XL, 5XL



Marja de toleranță a producției, respectând dimensiunile mărimii, poate fi de +/-3%.

| SIZE - cm                     | S  | M  | L  | XL | XXL | XXXL | 4XL | 5XL |
|-------------------------------|----|----|----|----|-----|------|-----|-----|
| C – ½ CIRCUMFERINȚĂ TORACE    | 54 | 56 | 59 | 62 | 65  | 68   | 72  | 76  |
| A – ½ CIRCUMFERINȚĂ TALIE     | 54 | 56 | 59 | 62 | 65  | 68   | 72  | 76  |
| D – LUNGIME SPATE             | 73 | 75 | 77 | 49 | 81  | 83   | 85  | 87  |
| E – LUNGIME MÂNECĂ CU MANȘETĂ | 64 | 66 | 68 | 70 | 72  | 74   | 76  | 78  |



PLUS VALOARE

5000 mm WP / 800 MVP

rossini.  
TECH

CE

CATEGORIA II  
EN ISO 13688:2013+A1:2021



EN ISO 20471:2013+A1:2016  
CLASA 3

50 SPĂLĂRI



21 –  
PORTOCALIU/BLEUMARIN



42 –  
GALBEN/BLEUMARIN



42 – GALBEN/BLEUMARIN



# FICHE TECHNIQUE – BLOUSON SOFTSHELL HOOK HI-VIS

CODE HH263

## TISSU

HAUTE VISIBILITÉ

100% polyester extensible mécanique

Poids 300 g/m<sup>2</sup>

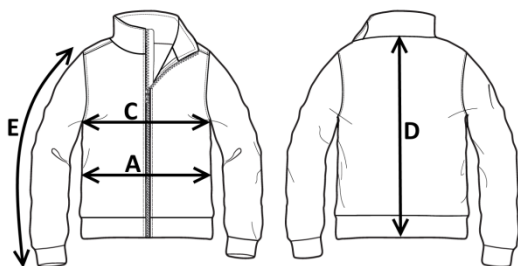
## DESCRIPTION

Bloouson haute visibilité en **Softshell à 3 couches tissu extensible mécanique**, intérieur doublé de micro polaire haute visibilité, col montant, fermeture centrale à glissière étanche, capuche amovible avec fermeture à glissière, poche extérieure sur la poitrine et poche intérieure avec velcro, deux poches latérales zippées étanches, poignet réglable par Velcro.

Manches amovibles zippées, ourlet arrière arrondi, inserts en tissu contrastant, bandes réfléchissantes imprimées par transfert à l'avant et à l'arrière avec motif en diagonale.

## TAILLES

S, M, L, XL, XXL, XXXL, 4XL, 5XL



rossini.  
TECH

CE

CATÉGORIE II  
EN ISO 13688:2013+A1:2021



EN ISO 20471:2013+A1:2016  
CLASSE 3

50 LAVAGES



21 – ORANGE/BLEU



42 – JAUNE/BLEU



42 – JAUNE/BLEU



La marge de tolérance de production, dans le respect des dimensions de la taille, peut être de +/- 3 %

| SIZE - cm                        | S  | M  | L  | XL | XXL | XXXL | 4XL | 5XL |
|----------------------------------|----|----|----|----|-----|------|-----|-----|
| C – ½ TOUR DE POITRINE           | 54 | 56 | 59 | 62 | 65  | 68   | 72  | 76  |
| A – ½ TOUR DE TAILLE             | 54 | 56 | 59 | 62 | 65  | 68   | 72  | 76  |
| D – LONGUEUR CENTRE ARRIERE      | 73 | 75 | 77 | 49 | 81  | 83   | 85  | 87  |
| E – LONGUEUR MANCHE AVEC POIGNET | 64 | 66 | 68 | 70 | 72  | 74   | 76  | 78  |