

SCHEDA TECNICA – GILET SOFTSHELL ZACK

COD. HH654

TESSUTO

94% poliestere

6% spandex

PLUS DI PRODOTTO



8000 mm WP / 2000 MVP

DESCRIZIONE

Gilet realizzato in tessuto *Softshell a tre strati*, chiusura con zip centrale, foro di aerazione sulla schiena.

Un taschino a filetto al petto destro chiuso con zip verticale e profilo rifrangente, due tasche inferiori a filetto chiuse con zip.

TAGLIE

S, M, L, XL, XXL, XXXL, 4XL



Categoria I
per rischi minimi

rossini.
TECH



01 – BLU



05 – NERO



12 – GRIGIO



06 – AZZURRO ROYAL



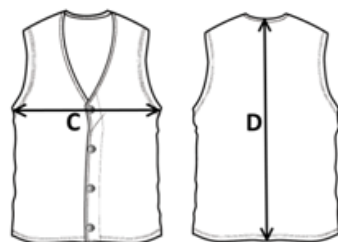
04 – VERDE



07 – ROSSO




01 – BLU



Il margine di tolleranza produttivo, nel rispetto delle dimensioni della taglia, può essere del +/- 3%

SIZE - cm	S	M	L	XL	XXL	XXXL	4XL
C – ½ CIRCONFERENZA TORACE	53	55	57	59	61	63	65
D – LUNGHEZZA CENTRO DIETRO	69	71	73	75	77	79	81

 **TECHNICAL SHEET – ZACK SOFTSHELL VEST**

CODE HH654

FABRIC

94% polyester
6% spandex

PRODUCT PLUS



8000 mm WP / 2000 MVP

DESCRIPTION

Vest made of *three-layer Softshell fabric*, with central zip closure, ventilation opening on the back.

One welt breast pocket with vertical zip and reflective outline on the right, two welt pockets with zips at the bottom.

SIZES

S, M, L, XL, XXL, XXXL, 4XL



Category I
for minimum risks



01 – BLUE



05 – BLACK



12 – GREY



06 – ROYAL BLUE



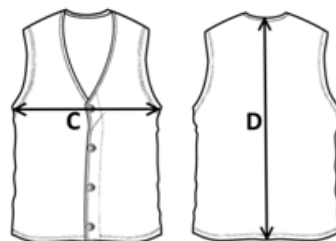
04 – GREEN



07 – RED



01 – BLUE



Measurements may vary +/- 3%, tolerance within size scale

SIZE - cm	S	M	L	XL	XXL	XXXL	4XL
C – ½ CHEST CIRCUMFERENCE	53	55	57	59	61	63	65
D – CENTER BACK LENGTH	69	71	73	75	77	79	81

 FICHA TÉCNICA – CHALECO SOFTSHELL ZACK

CÓD. HH654

COMPOSICIÓN

94% poliéster
6% spandex

VENTAJAS DEL PRODUCTO



8000 mm WP / 2000 MVP

DESCRIPCIÓN

Chaleco en tejido *Softshell de 3 capas*, con cierre de cremallera en el centro, orificio de ventilación en la espalda. Un bolsillo de ojal a la derecha del pecho cerrado con cremallera vertical y borde reflectante, dos bolsillos de ojal con cremallera en la parte inferior.

TALLAS

S, M, L, XL, XXL, XXXL, 4XL



Categoría I
para riesgos mínimos



01 – AZUL



05 – NEGRO



12 – GRIS



06 – AZUL REAL



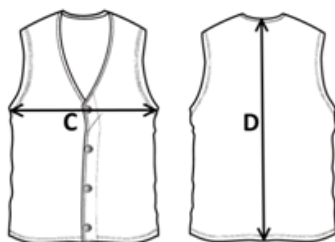
04 – VERDE



07 – ROJO



01 – AZUL



El margen de tolerancia productiva, respetando las dimensiones de la talla, puede ser de +/- 3%

SIZE - cm	S	M	L	XL	XXL	XXXL	4XL
C – ½ CIRCUNFERENCIA TORÁCICA	53	55	57	59	61	63	65
D – LONGITUD CENTRAL ESPALDA	69	71	73	75	77	79	81

FISA TEHNICA – VESTĂ SOFTSHELL ZACK

COD. HH654

MATERIAL

94% poliester
6% spandex

PLUS VALOARE



8000 mm WP / 2000 MVP

DESCRIERE

Vestă confecționată din țesătură *Softshell* cu 3 straturi, închidere cu fermoar central, orificiu de aerisire la spate.

Un buzunar welt l piept în partea dreaptă, închis cu fermoar vertical și profil reflectorizant, două buzunare welt în partea de jos, închise cu fermoar.

MĂRIMI

S, M, L, XL, XXL, XXXL, 4XL



Categoria I
pentru riscuri minime

rossini.
TECH



01 – BLEUMARINE



05 – NEGRU



12 – GRI



06 – ALBASTRU REGAL



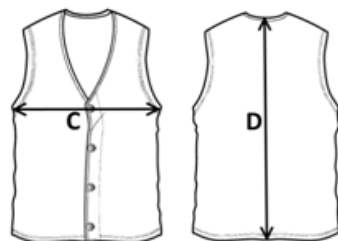
04 – VERDE



07 – ROȘU



01 – BLEUMARINE



Marja de toleranță a producției, respectând dimensiunile mărimii, poate fi de +/-3%.

SIZE - cm	S	M	L	XL	XXL	XXXL	4XL
C – ½ CIRCUMFERINȚĂ TORACE	53	55	57	59	61	63	65
D – LUNGIME SPATE	69	71	73	75	77	79	81

FICHE TECHNIQUE – GILET SOFTSHELL ZACK

CODE HH654

TISSU

94% polyester

6% spandex

PLUS DE PRODUITS



8000 mm WP / 2000 MVP

DESCRIPTION

Gilet réalisé en tissu *Softshell à trois couches*, avec fermeture Éclair centrale, trou d'aération dans le dos.

Une poche passepoilée sur la poitrine droite fermée par une fermeture Éclair verticale et un profil réfléchissant, deux poches inférieures passepoilées fermées par une fermeture Éclair.

TAILLES

S, M, L, XL, XXL, XXXL, 4XL



Catégorie I
pour risques minimaux

rossini.
TECH



01 – BLEU



05 – NOIR



12 – GRIS



06 – BLEU CLAIR ROYAL



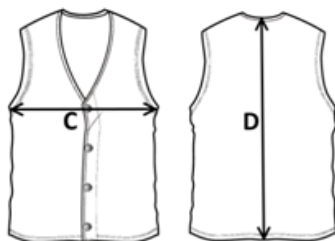
04 – VERT



07 – ROUGE



01 – BLEU



La marge de tolérance de production, dans le respect des dimensions de la taille, peut être de +/- 3 %

SIZE - cm	S	M	L	XL	XXL	XXXL	4XL
C – ½ TOUR DE POITRINE	53	55	57	59	61	63	65
D – LONGUEUR CENTRE ARRIERE	69	71	73	75	77	79	81